



No charger is more efficient or safer for your battery fleet.

## USA Made!

**LATEST TECHNOLOGY!**

Changing batteries takes time away from moving product and can lead to accidents. Our HF series high frequency chargers allow you to keep the battery in the truck saving time and keeping the work place safe.

Cooler batteries last longer. The HF series consistently delivers the coolest charge to the battery even at higher charge rates!

Intelligent, modular design. If a module fails the others will continue to operate.

Constant communication between battery and charger for perfect charge every time. Can-Bus available-optional.

Graphic Icon display allows quick identification of charge status and "ready" battery.

24 pre-loaded charger algorithms to charge any battery chemistry, including Lithium Ion.

California Energy Commission CEC and Underwrites Labs listed. 

**INTELENT CHARGING**

# HF Series Chargers

## Conventional, Opportunity and Fast

**BENEFITS**

Coolest , safest charge for your battery

Eliminate battery changes.

Increase driver productivity.

Lower Energy costs!

Peak efficiency 94%. Power Factor 95%



**FEATURES**

Less time on charge.

Multi voltage capable.

Conventional, Opportunity or fast charge

Small, lightweight modular design



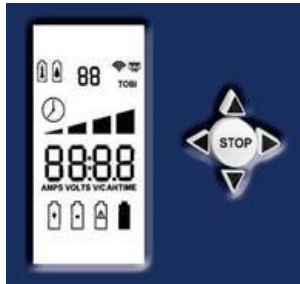
Phone: 314-739-1414  
 Fax: 314-739-1277  
 E-mail: sales@chargingti.com  
 www.chargingti.com

Charging Technologies Inc  
 4328 Bridgeton Industrial Drive  
 Bridgeton, Missouri 63044

# High Frequency charging solutions

# High Frequency Charger selector Guide

CHARGER COMMUNICATION



P46-304 Control  
Wireless  
Communication from  
charger to computer.



BATTERY COMMUNICATION

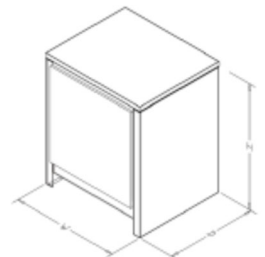


TOBi PI Wi-Z Wireless  
Communication between  
battery and charger and  
battery and computer.

Cells	DCV *	MAX DC AMPS	ACA @ 240/480/600	Model number	Standard 8 hr charge Battery range	OPP. charge Battery range	40% FAST. charge Battery range
12	24	65	5.0/2.5/2.0	24-1A-*3	0-430	0-260	0-160
12	24	130	9.8/4.9/4.0	24-1B-*3	431-865	261-520	161-330
12	24	195	14.8/7.4/6.0	24-1A1B-*3	866-1300	521-780	331-490
12	24	260	19.6/9.8/7.9	24-2B-*3	1301-1700	781-1040	491-650
12	24	325	24.6/12.3/9.8	24-1A2B-*3	1701-2165	1041-1300	651-810
12/18/24	24/36/48	50/50/40	5.6/2.8/2.2	48-1A-*3	300/300/242	200/200/160	125/125/100
12/18/24	24/36/48	100/100/80	11.2/5.6/4.5	48-1B-*3	600/600/485	400/400/320	250/250/200
12/18/24	24/36/48	150/150/120	16.8/8.4/6.7	48-1A1B-*3	900/900/725	600/600/480	375/375/300
12/18/24	24/36/48	200/200/160	22.4/11.2/9.0	48-2B-*3	1200/1200/970	800/800/640	500/500/400
12/18/24	24/36/48	250/250/200	28/14/11.2	48-1A2B-*3	1500/1500/1200	1000/1000/800	625/625/500
12/18/24	24/36/48	300/300/240	33.6/16.8/13.4	48-3B-*3	1800/1800/1450	1200/1200/960	750/750/600
12/18/24	24/36/48	350/350/280	39.2/19.6/15.7	48-1A3B	2120/2120/1700	1400/1400/1120	875/875/700
12/18/24	24/36/48	400/400/320	44.8/22.4/17.9	48-4B-*3	2425/2425/1940	1600/1600/1280	1000/1000/800
36/40	72/80	23	5.6/2.8/2.2	80-1A-*3	0-150	0-92	0-60
36/40	72/80	45	11.2/5.6/4.5	80-1B-*3	151-300	93-180	61-110
36/40	72/80	68	16.8/8.4/6.7	80-1A1B-*3	301-453	181-272	111-170
36/40	72/80	90	22.4/11.2/9.0	80-2B-*3	454-600	272-360	171-230
36/40	72/80	113	28/14/11.2	80-1A2B-*3	601-753	361-452	231-280
36/40	72/80	135	33.6/16.8/13.4	80-3B-*3	754-900	453-540	281-340
36/40	72/80	158	39.2/19.6/15.7	80-1A3B-*3	901-1050	541-632	341-400
36/40	72/80	180	44.8/22.4/17.9	80-4B-*3	1051-1200	633-720	401-450

\* A/C line  
240 = D Will operate at 208 /3/60 with 25% reduction in output  
480 = E  
600 = AG

CASE DIMENSIONS = ADD Z AFTER MODEL # FOR 905						
CASE	HEIGHT		WIDTH		DEPTH	
	IN	CM	IN	CM	IN	CM
900	22.6	66.04	13.13	33.34	14.63	37.15
905 Z	15.6	39.64	13.13	33.34	14.63	37.15



905 Z Cabinet Available with 1 & 2 module chargers only



Phone: 314-739-1414  
Fax: 314-739-1277  
E-mail: sales@chargingti.com  
www.chargingti.com

Charging Technologies Inc  
4328 Bridgeton Industrial Drive  
Bridgeton, Missouri 63044